















This fabulous three bedroom semi-detached house has been extended and remodelled to provide a most impressive standard of accommodation. Internally comprising to the ground floor of a hall with a cloakroom/wc and staircase to the first floor, lounge to the front and to the rear a superb open plan kitchen / diner and family area. The kitchen is fitted with an excellent range of stylish units, luxury worksurfaces, a feature island with breakfast bar and there are bi-folding doors to the rear garden. To the first floor there are three bedrooms and an excellent modern family bathroom/wc with a shower cubicle. Externally to the front of the house there is a driveway providing off street parking, a single garage and a landscaped low maintenance garden to the rear. This popular and convenient location is ideally placed for local amenities, shopping facilities and schools as well as offering excellent transport links to surrounding areas. Early viewing is highly recommended.

# MAIN ROOMS AND DIMENSIONS

## Ground Floor

Access via Composite entrance door.

### Reception Hall



Stairs to first floor with storage under.

### Lounge



Double glazed bay window to front elevation, double radiator, under floor heating and feature alcove walls with lighting.

### Kitchen/Diner



Range of modern wall and base units with countertops over incorporating 1 1/2 bowl under mount sink and drainer with mixer tap. Integrated oven and electric hob, microwave,

fridge freezer, wine fridge and dishwasher. Radiator, electric fire and double glazed bi-folding doors to rear.

### Cloakroom/WC



Low level WC and washbasin.

### First Floor Landing



Double glazed window to side elevation.

## Bedroom 1



Double glazed bay window to front elevation, double radiator and built in wardrobes.

## Bedroom 2



Double glazed window to rear elevation and rouble radiator.

## Bedroom 3



Double glazed window to front elevation, radiator and storage cupboard. Access point to loft.

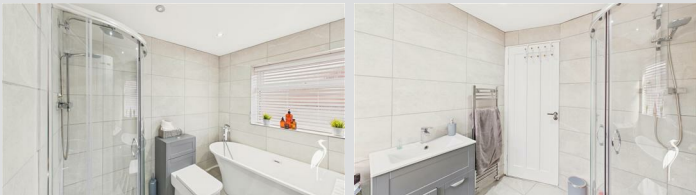
Visit [www.peterheron.co.uk](http://www.peterheron.co.uk) or call 0191 510 3323

**Tried. Trusted. Recommended.** City Branch 20 Fawcett Street Sunderland SR1 1RH Fulwell Branch 15 Sea Road Fulwell Sunderland SR6 9BS



# MAIN ROOMS AND DIMENSIONS

## Bathroom



Low level WC, washbasin set into vanity unit, freestanding bath and shower cubicle with waterfall shower, chrome heated towel rail, under floor heating and double glazed window to rear elevation.

## Outside



Garden to the front with driveway providing off street parking whilst to the rear a generous south facing garden with artificial lawn and block paved seating area.

## Council Tax Band

The Council Tax Band is Band C.

## Tenure Freehold

We are advised by the Vendors that the property is Freehold. Any prospective purchaser should clarify this with their Solicitor.

## Important Notice - Particulars

Peter Heron Ltd for themselves and for the vendors of this property whose agents they are, give notice that:- The particulars are set out for general guidance only for the intending Purchasers and do not constitute part of an offer or contract. Whilst we endeavour to make our sales particulars accurate and reliable, if there is anything of particular importance which you feel may influence your

decision to purchase, please contact the office and we will be pleased to check the information. Do so particularly, if contemplating travelling some distance to view the property. All descriptions, dimensions, references to conditions and necessary permissions for use and occupation and other details are given in good faith, and are believed to be correct, however any intending purchasers should not rely on them that statements are representations of fact, but must satisfy themselves by inspection or otherwise as to the correctness of each of them. Independent property size verification is recommended.

Lease details, service charges and ground rent (where applicable) are given as a guide only and should be checked and confirmed by your Solicitor prior to exchange of contracts. No person in the employment of Peter Heron Ltd has any authority to make or give any representation or warranty whatever in relation to this property or these particulars, nor to enter into any contract on behalf of Peter Heron Ltd, nor into any contract on behalf of the Vendor. The copyright of all details and photographs remain exclusive to Peter Heron Ltd.

Please note that in the event the purchaser uses the services of Peter Heron Conveyancing in the purchase of their home, Peter Heron Ltd will be paid a completion commission of £300.00 by Movewithus Ltd.

## Fawcett Street Viewings

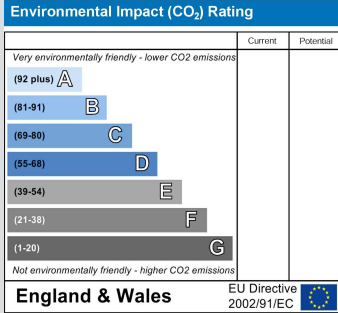
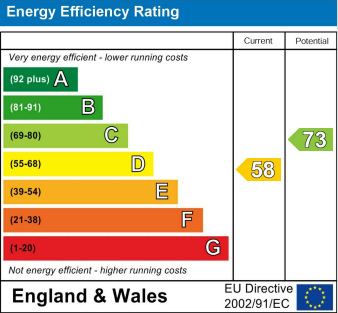
To arrange an appointment to view this property please contact our Fawcett Street branch on or book viewing online at peterheron.co.uk

## Opening Times

Monday to Friday 9.00am - 5.00pm Saturday 9.00am - 12noon

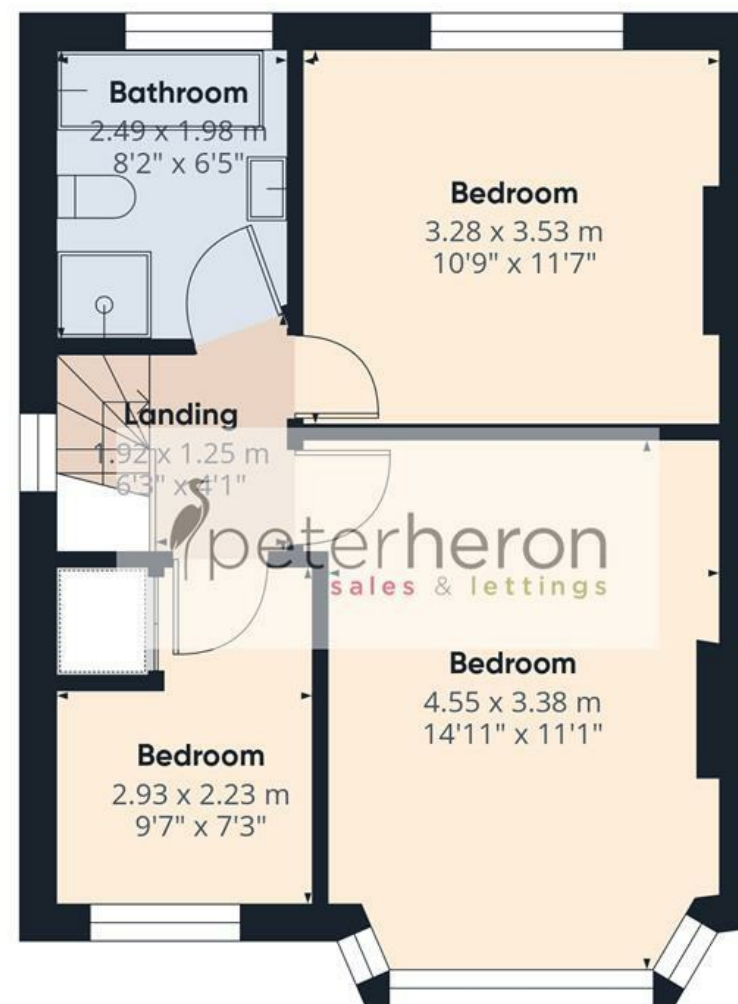
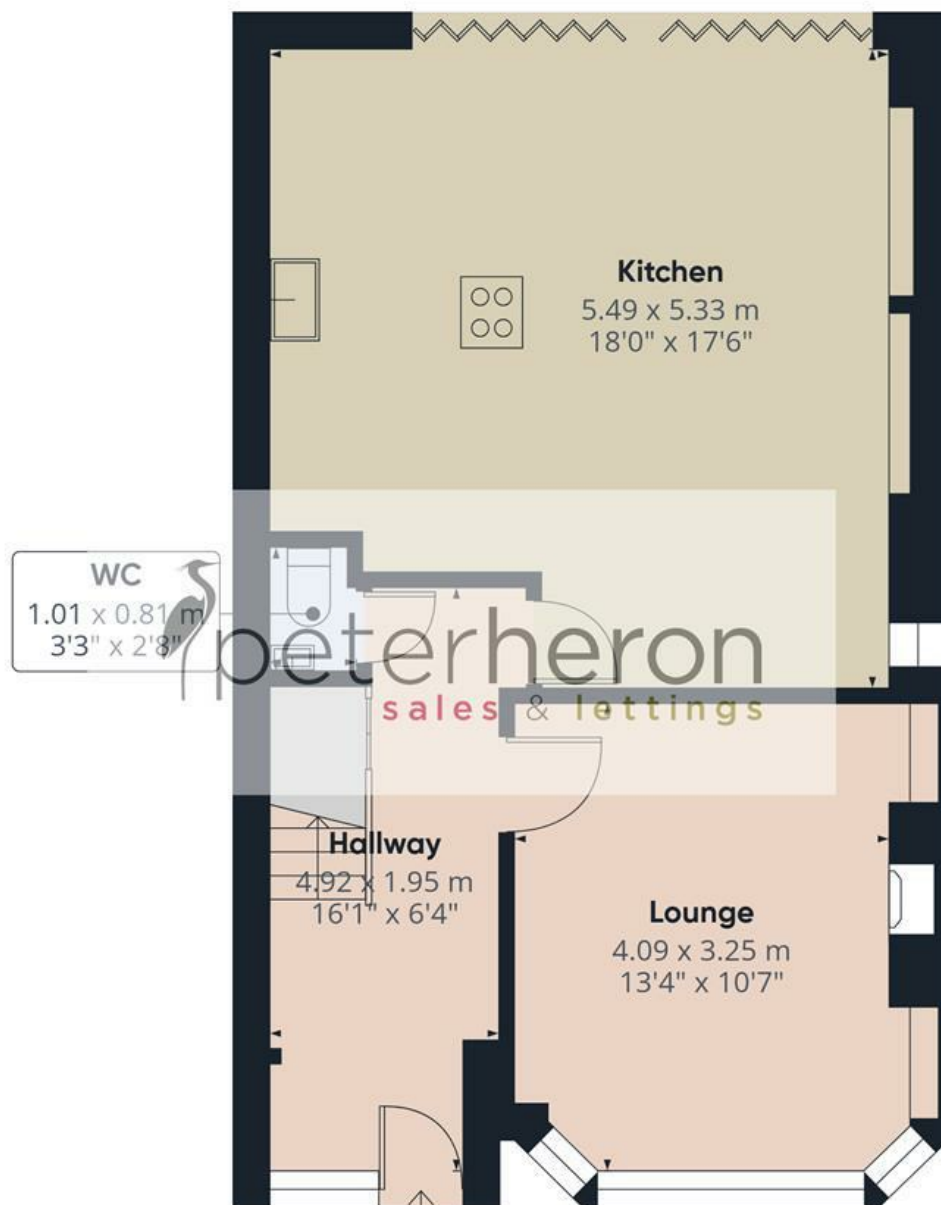
## Ombudsman

Peter Heron Estate Agents are members of The Property Ombudsman and subscribe to The Property Ombudsman Code of Practice.



Visit [www.peterheron.co.uk](http://www.peterheron.co.uk) or call 0191 510 3323

Tried. Trusted. Recommended. City Branch 20 Fawcett Street Sunderland SR1 1RH Fulwell Branch 15 Sea Road Fulwell Sunderland SR6 9BS



**First Floor**

**Approximate total area<sup>(1)</sup>**

90.1 m<sup>2</sup>

971 ft<sup>2</sup>

(1) Excluding balconies and terraces

Calculations reference the RICS IPMS 3C standard. Measurements are approximate and not to scale. This floor plan is intended for illustration only.

GIRAFFE360

